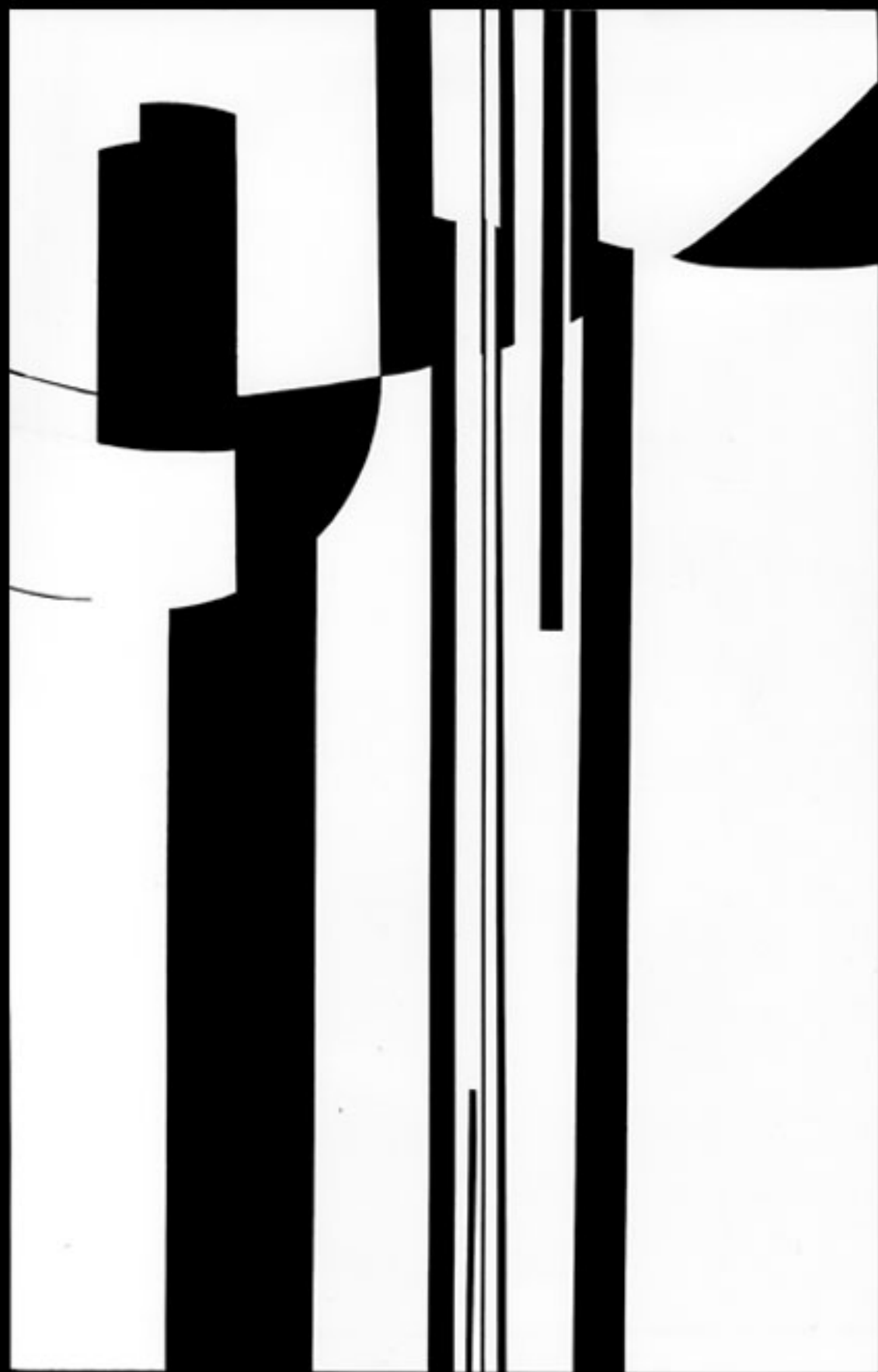
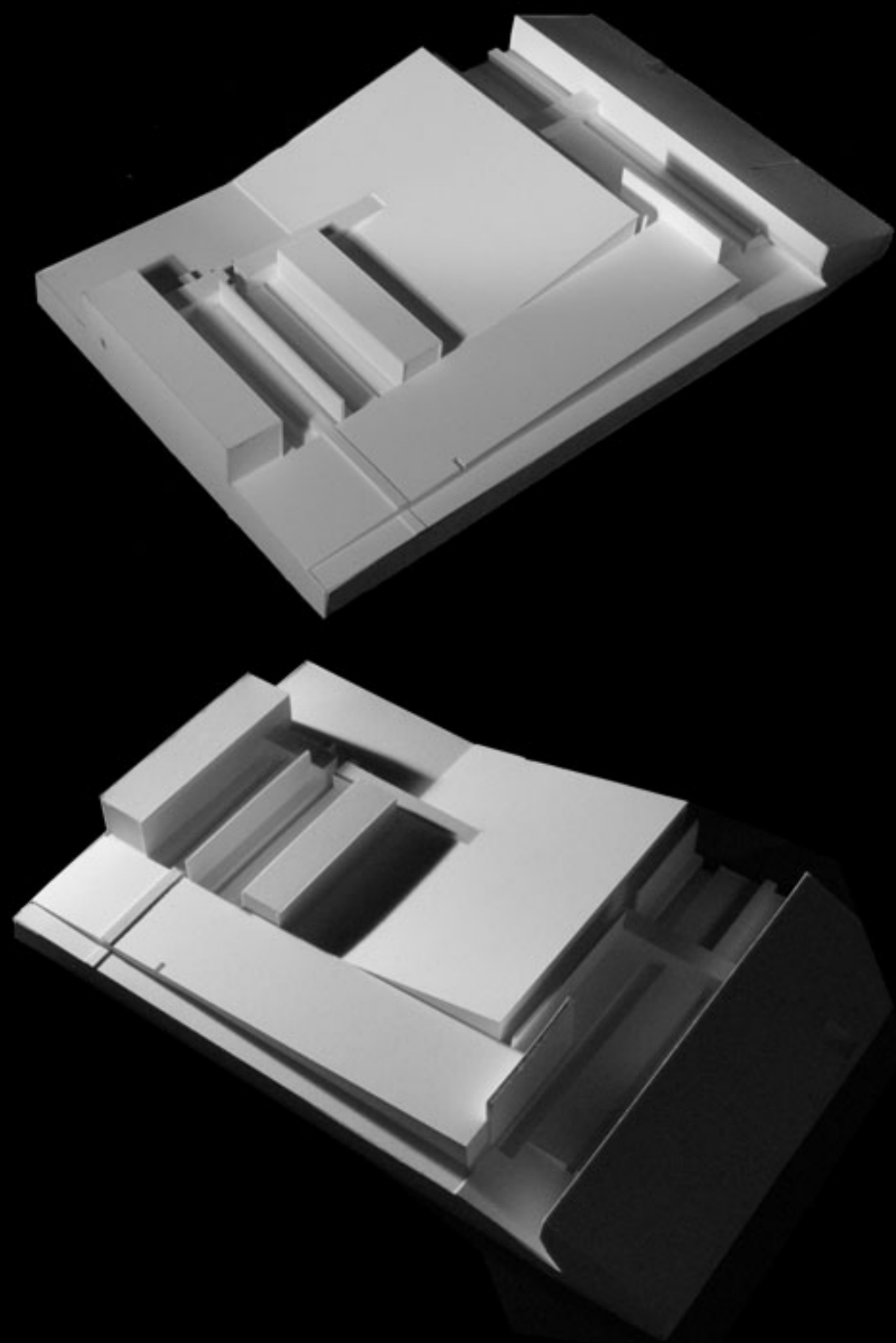
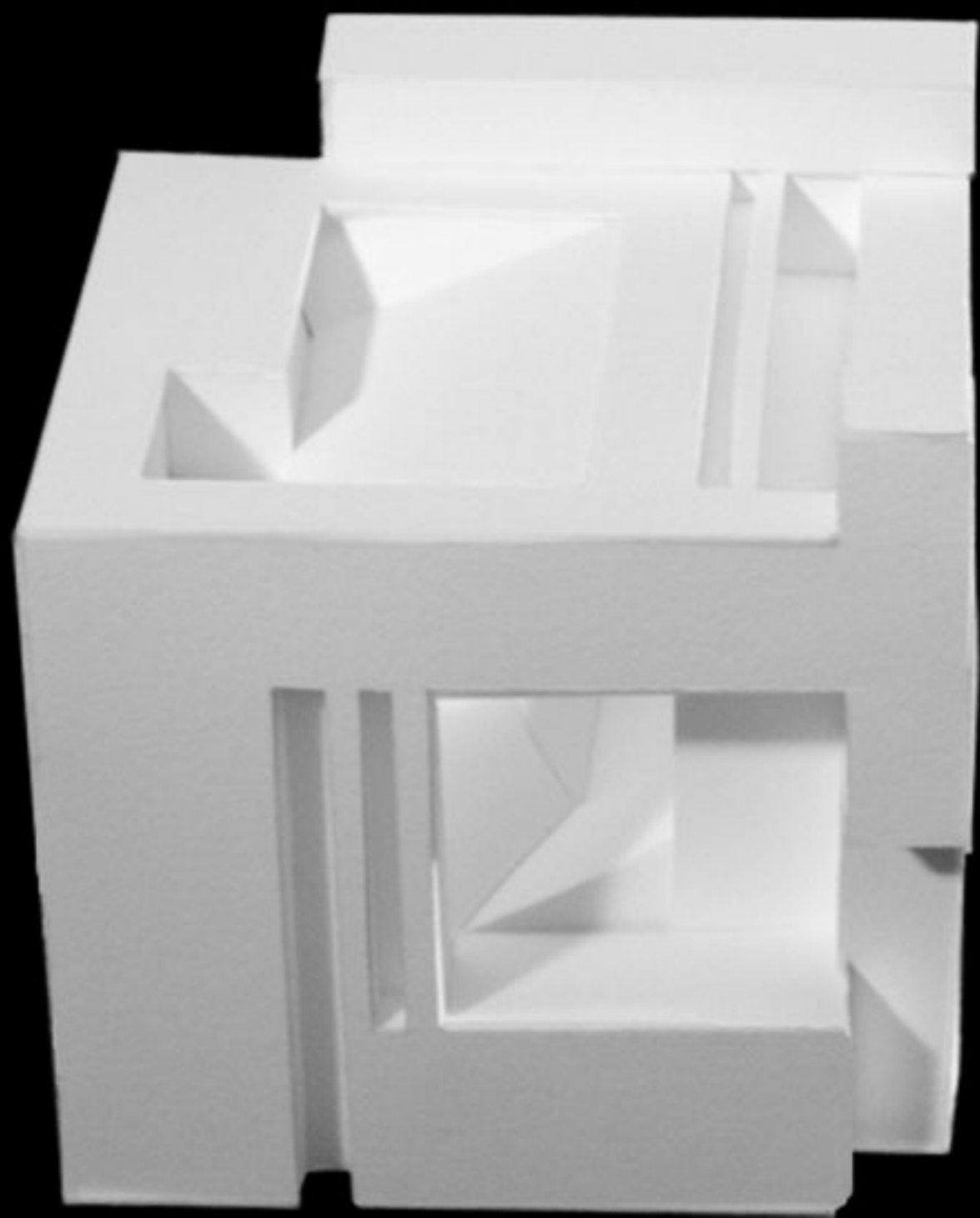


0 1 2 3 4 5 6 7 8 9









D
E
S
I
G
NT
H
R
O
U
G
HI
N
T
E
R
A
C
T
I
O
N

Bamboo is initially planted in a very regular and evenly spaced pattern.

The bamboo grows fast enough that people are allowed to harvest it. Over time as people harvest bamboo the pattern gets more irregular and the people who decide to harvest the bamboo physically change the design of the bamboo, which changes the space created by the wall of bamboo.

M
A
T
E
R
I
A
L
S

Fargesia nitida - A lovely and very hardy Clambering Bamboo. This Bamboo is Hardy to - 20 below. *Fargesia nitida* will reach to be around 32 FT. tall, and will stay green year round. *Fargesia nitida* has a life span of about 70 years.

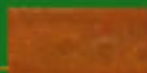


Patented steel - The steel being used is a low carbon steel. The low amount of carbon makes the steel stronger and more ductile than bamboo.

The steel will be treated with a mixture of rock salt, vinegar, and hydrogen peroxide. This treatment will cause the metal to quickly rust. To coat the metal after creating holes, wax will be used on all surfaces where there isn't a lot of contact, but the portions that do get a lot of contact such as handrails, a polyurethane material will be used on the metal.

C
O
L
O
R

The above Bamboo is the material that is being used for all the wood in this project. The bamboo is green with hints of orange at the stalk.

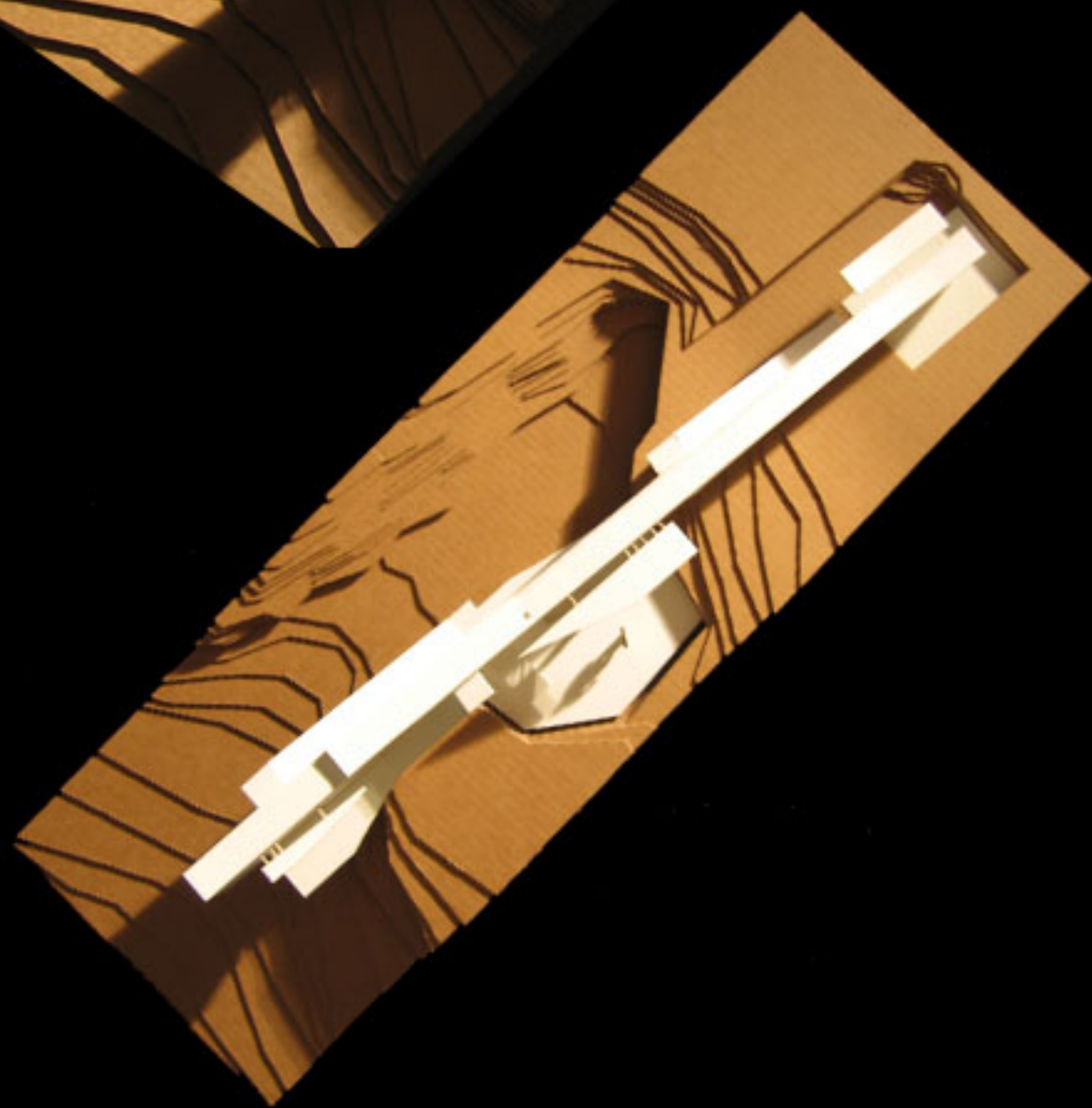
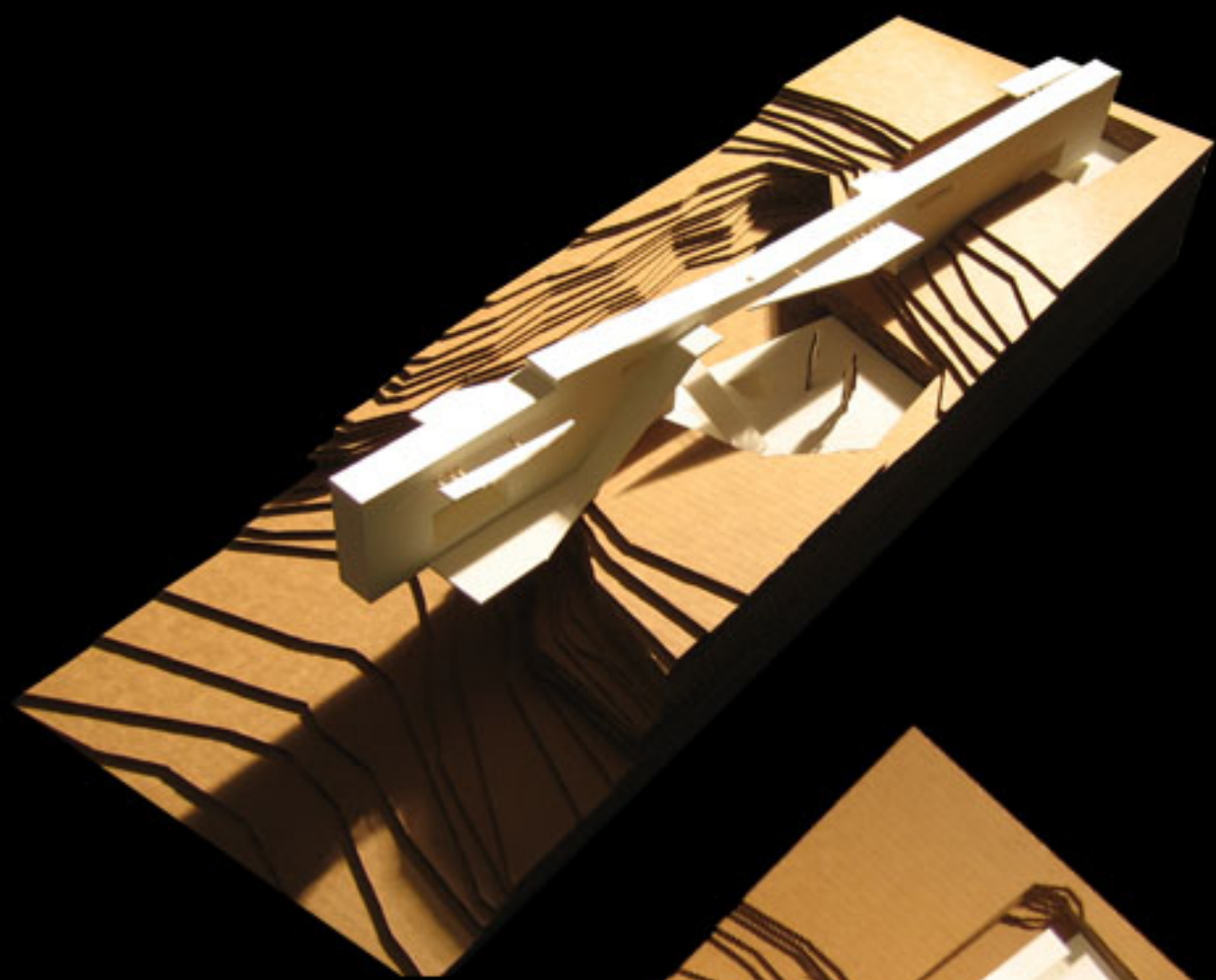


The rust color above would be the color of the steel. This color is easily obtained by spraying the steel with a mixture of rock salt, vinegar, and hydrogen peroxide.





— 1 —
工 图 中 西
Σ
0 1 1 0 0



MOYPOH - ICH



0
1
2
3
4
5
6
7
8
9
A
B
C
D
E
F
G
H
I
J
K
L
M
N
O
P
Q
R
S
T
U
V
W
X
Y
Z



