

UNDERGRADUATE PORTFOLIO

LOGAN HENDRICKS

STUDIO

FURNITURE

PHOTOGRAPHY

HAND GRAPHICS

MISCELLANEOUS

TABLE OF CONTENTS

PORTFOLIO

MONTANA STATE UNIVERSITY

THE FOLLOWING IS A COMPREHENSIVE COLLECTION OF THE UNDERGRADUATE WORK OF LOGAN HENDRICKS.

1 Y

2 Y

3 Y

4 Y

CD

LD

P

HG

M

STUDIO

- FIRST YEAR
- SECOND YEAR
- THIRD YEAR
- FOURTH YEAR

FURNITURE

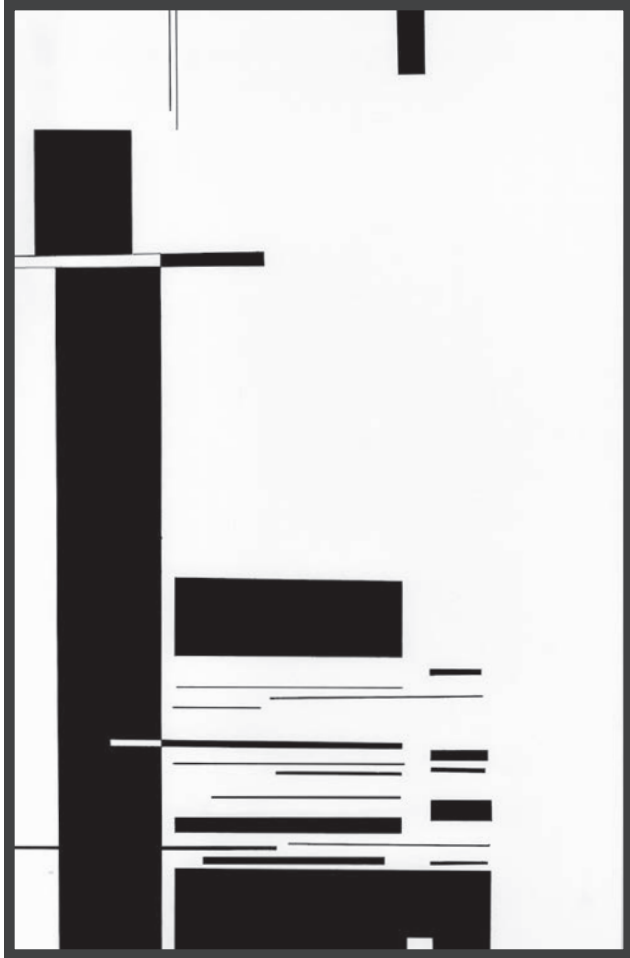
- CHAIR DESIGN
- LIGHTING DESIGN

PHOTOGRAPHY

HAND GRAPHICS

MISCELLANEOUS

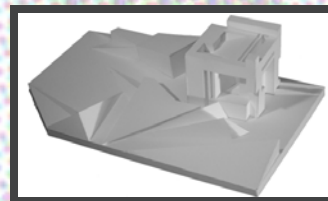
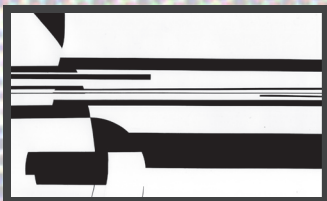
LINE



RELIEF



ADDITIONAL PROJECTS



WALL



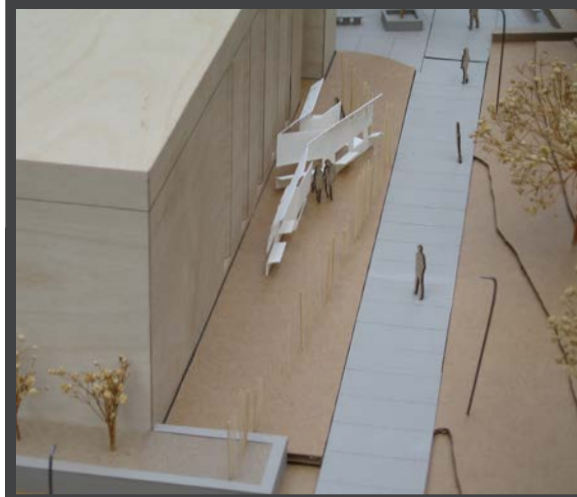
PROGRAM

EXPLORE THE PROPERTIES OF A WALL THAT RUNS FROM THE LAND TO THE SEA.

PRODUCT

THE CENTER OF THE WALL WAS CUT OUT CREATING A FLOATING PLATFORM KEPT IN PLACE BY THE SURROUNDING CLIFFS, WHICH SERVES AS A MEETING PLACE FOR THE LAND AND THE SEA TRAVELER.

THREE WALLS / SIX STICKS



PROGRAM

CREATE A SEATING AREA OUTSIDE OF CHEEVER HALL USING THREE SHEETS OF STEEL AND MULTIPLE PIECES OF WOOD.

PRODUCT

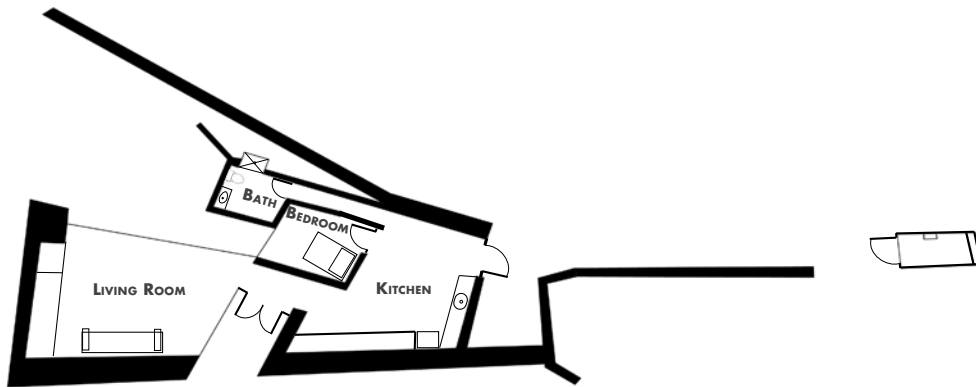
THE SEATING AREA EXPLORES HOW PEOPLE CAN INTERACT WITH A SPACE. THE WOOD IN FRONT, SCREENING THE SEATING IS LIVING BAMBOO THAT THE PUBLIC CAN CUT AS THE PLEASE. THROUGH THIS PROCESS, THEY DESIGN AND CONTROL THE ENVIRONMENT OF THE SEATING AREA.



SECOND YEAR

HOUSE FOR A WRITER

WEST ELEVATION



FLOOR PLAN

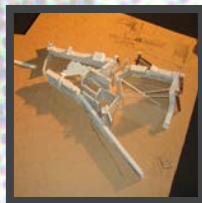
PROGRAM

CREATE A HOUSE AND WRITING SPACE FOR A WRITER ON THE NORTH SIDE OF BOZEMAN.

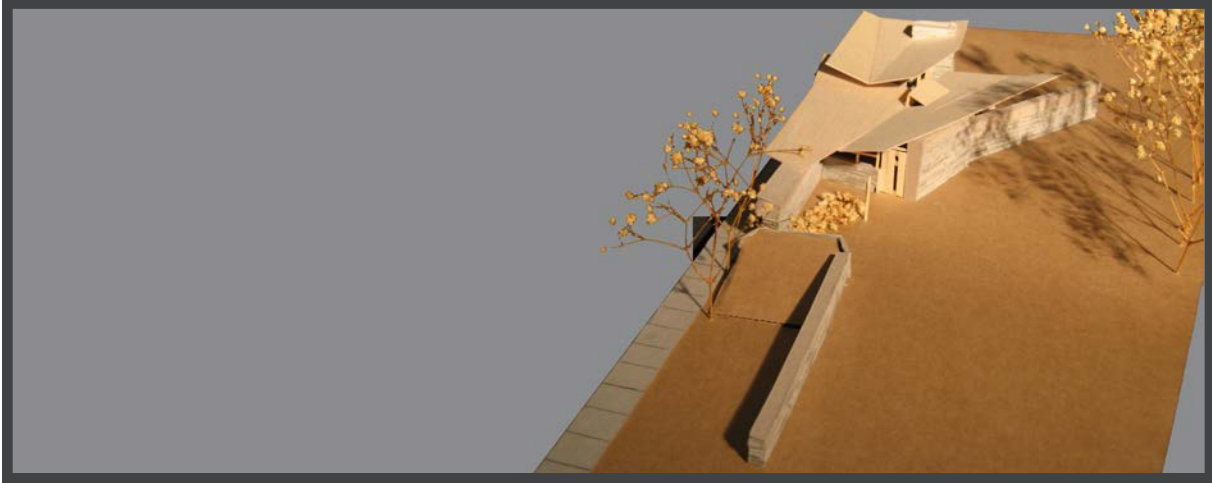
PRODUCT

THE HOUSE TAKES ADVANTAGE OF THE SITE, SHIELDING IN SOME CASES AND IN OTHERS OPENING UP TO THE EXTERNAL ACTIVITIES OF THE NEIGHBORHOOD AS A WAY OF BRINGING INSPIRATION TO THE WRITER FOR HIS WORK.

PROCESS



SOUTH PERSPECTIVE



AERIAL PERSPECTIVE



1 Y

2 Y

3 Y

4 Y

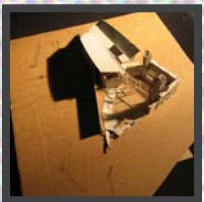
CD

LD

P

HG

M



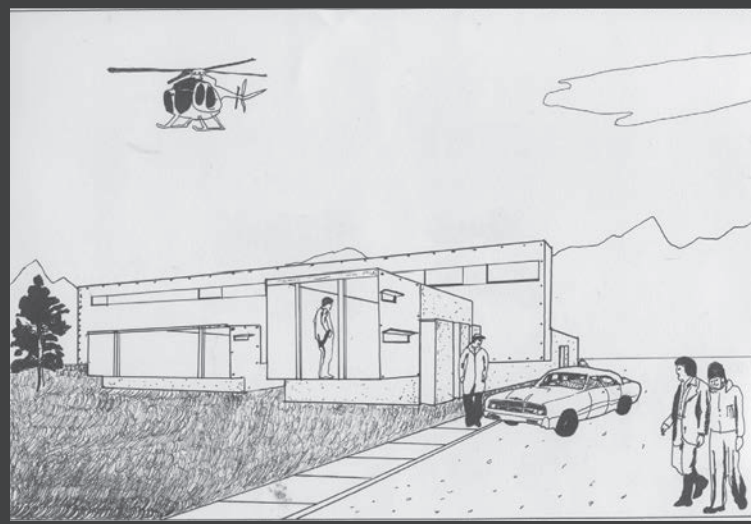
EXTERIOR PERSPECTIVE

PROGRAM

CREATE A BUILDING FOR THE RETAIL OF TWO DIFFERENT BRANDS OF HIGH END FIREPLACES.

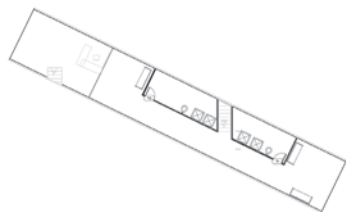
PRODUCT

THE BUILDING EXPLORES HOW THE INTERNAL FUNCTIONS DIRECTLY RELATE TO WHAT OCCURS OUTSIDE. IN THIS CASE, THE HEAT GENERATED INSIDE IS EXPELLED THROUGH VENTS ON THE EXTERIOR SKIN. THE POSITION OF THESE OPEN AND CLOSED VENTS INFLUENCES HOW WATER AND OTHER ELEMENTS AFFECT HOW THE COR-10 STEEL SKIN WEATHERS. AS THE BUILDING AGES, THE EXTERIOR INFORMS WHAT IS OCCURRING INSIDE.

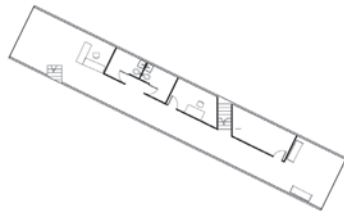


FLOOR PLANS

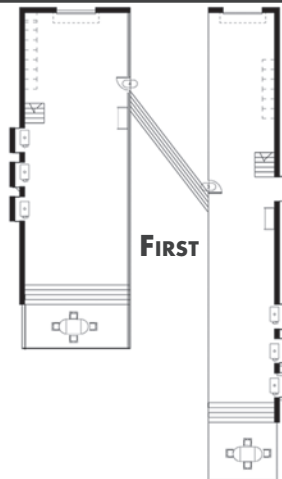
THIRD



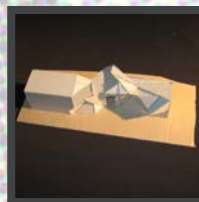
SECOND



FIRST



PROCESS



AERIAL VIEW



COURTYARD



1 Y

2 Y

3 Y

4 Y

C D

L D

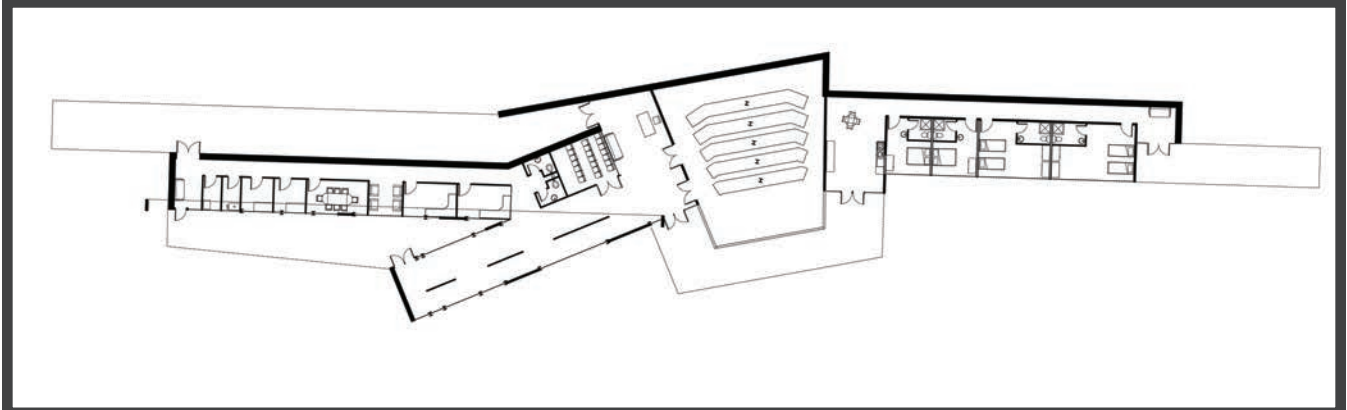
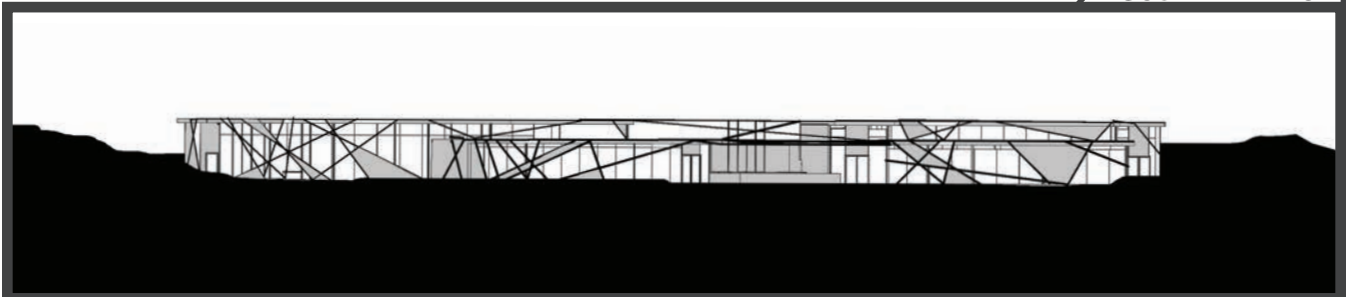
P

H G

M



SOUTH ELEVATION



FLOOR PLAN

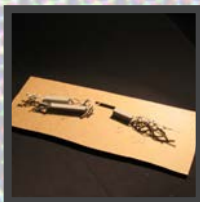
PROGRAM

CREATE A SPACE FOR THE NATURE CONSERVANCY ON THE SUN RANCH.

PRODUCT

THE BUILDING EXPLORES HOW STRANDS CAN BE USED TO CREATE SPACES THAT DIFFER BETWEEN SOLID, AND LIGHT. IMPORTANT SPACES ARE CREATED AT THE POINTS WHERE SOLID AND LIGHT MEET.

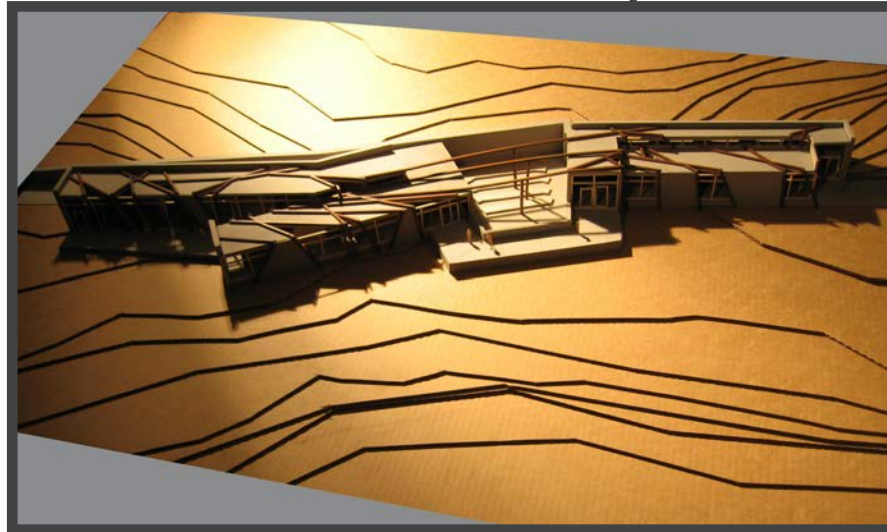
PROCESS



INTERIOR PERSPECTIVE



MODEL AERIAL VIEW



1 Y

2 Y

3 Y

4 Y

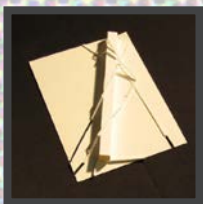
CD

LD

P

HG

M



MODEL

PROGRAM

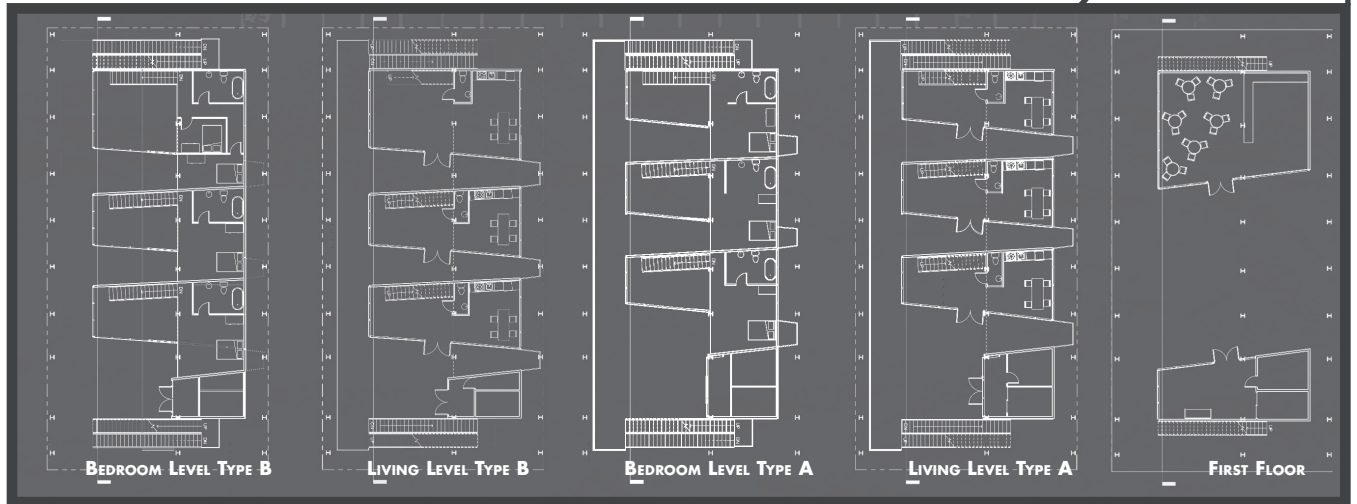
TO CREATE A MID-RISE HOUSING COMPLEX WHERE A HIGH PERCENTAGE OF THE OCCUPANTS ARE BLIND.

PRODUCT

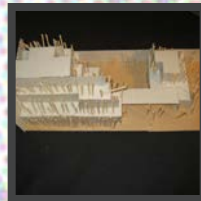
THE BUILDING PROVIDES THE OCCUPANT WITH NON-VISUAL SENSATIONS THROUGH THE WAY THE EXTERIOR MOVABLE PANELS CONTROL SUN AND AIR CIRCULATION, AND THEIR MOVEMENT THROUGH THE APARTMENT COMPLEX.



FLOOR PLANS



PROCESS



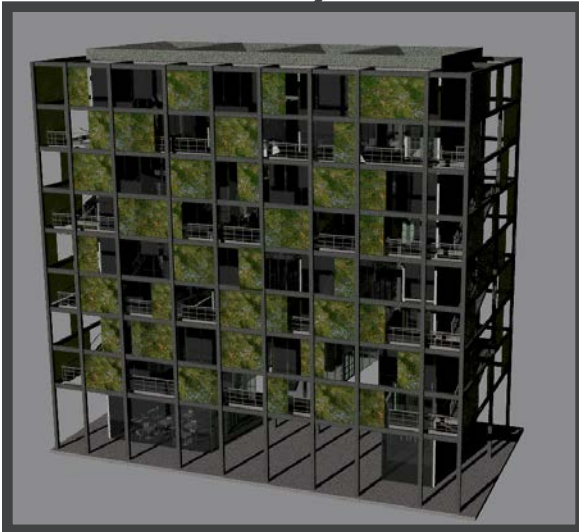
EXTERIOR PERSPECTIVE



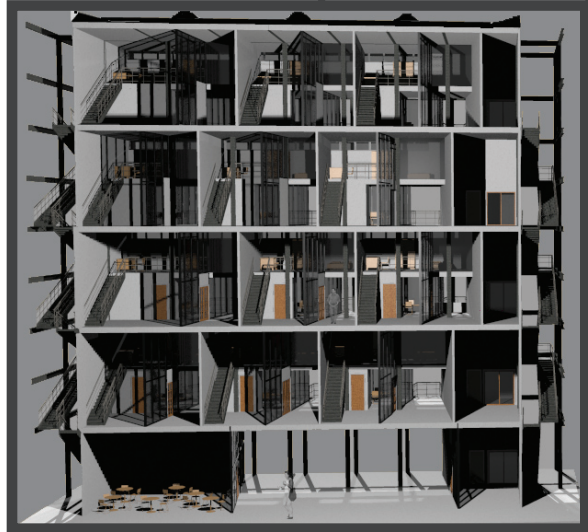
INTERIOR PERSPECTIVE



EXTERIOR PERSPECTIVE



SECTION



1 Y

2 Y

3 Y

4 Y

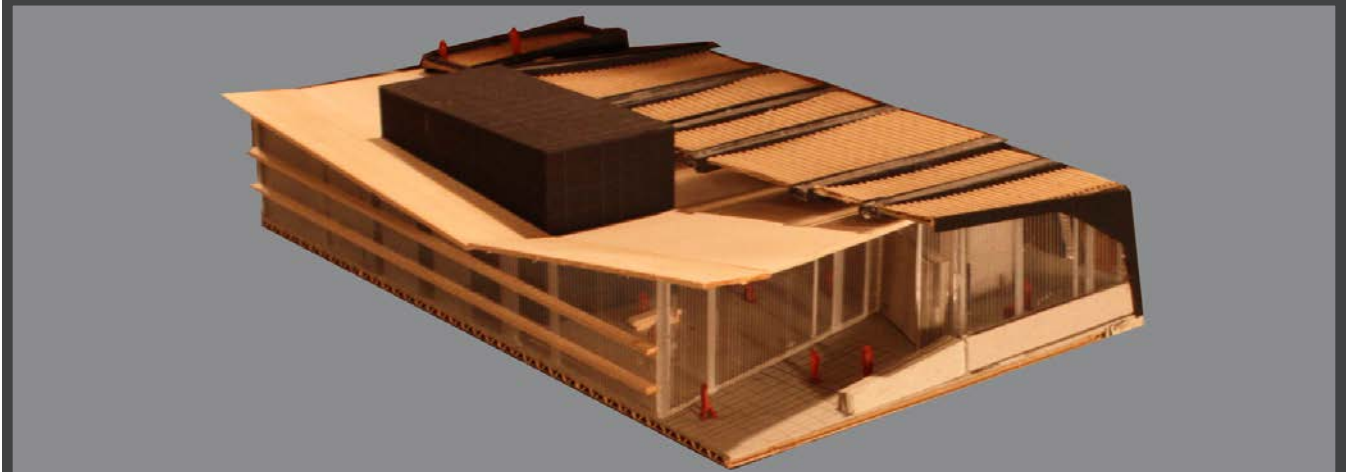
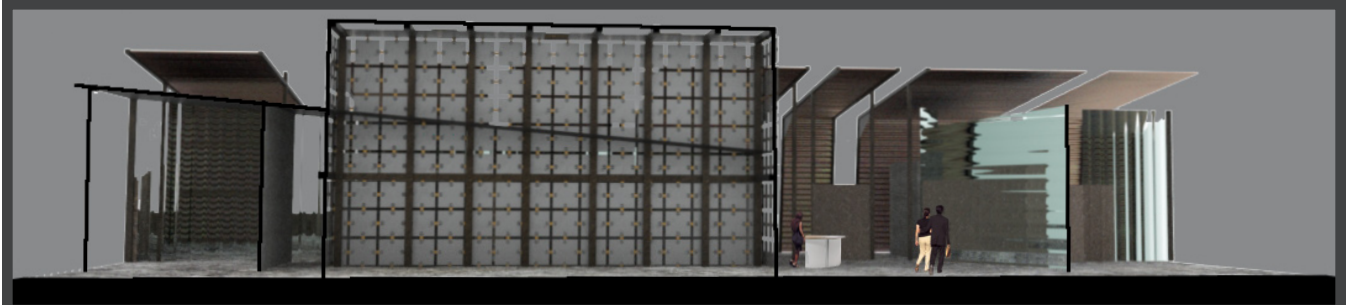
CD

LD

P

HG

M



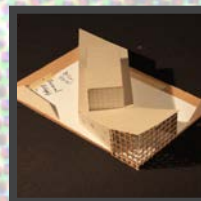
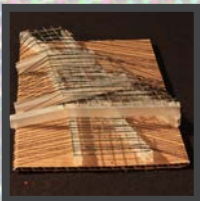
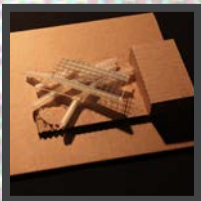
PROGRAM

CREATE A COMMUNITY CENTER FOR BUTTE, MT.

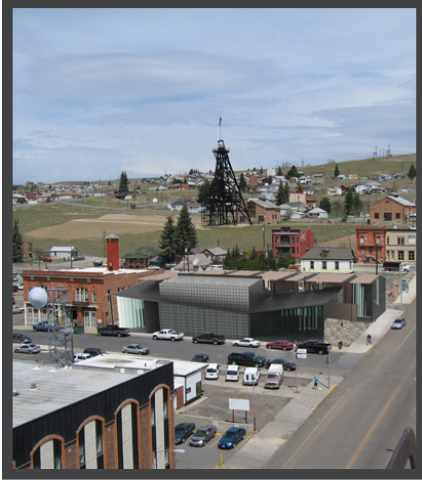
PRODUCT

A BLACK BOX THEATER THAT COMBINES BUTTE'S HERITAGE WITH A CONCEPT FOR BUTTE'S FUTURE

PROCESS



EXTERIOR PERSPECTIVE



INTERIOR PERSPECTIVE



1 Y

2 Y

3 Y

4 Y

CD

LD

P

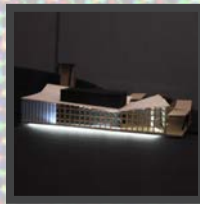
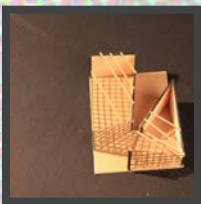
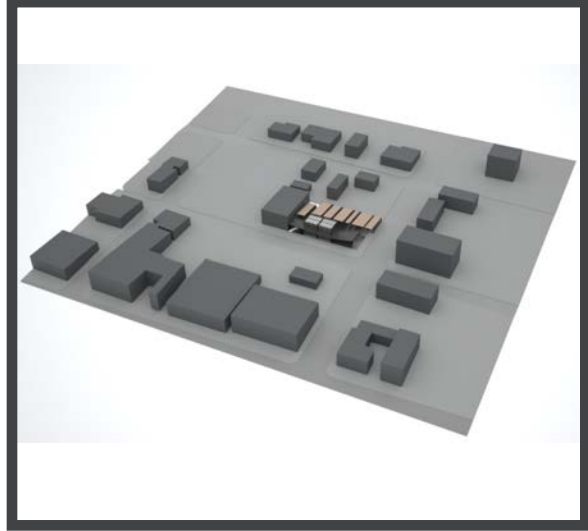
HG

M

INTERIOR PERSPECTIVE



SITE PLAN



EXTERIOR PERSPECTIVE



PROGRAM

CREATE A NEW CREATIVE ARTS LIBRARY FOR THE 21ST CENTURY.

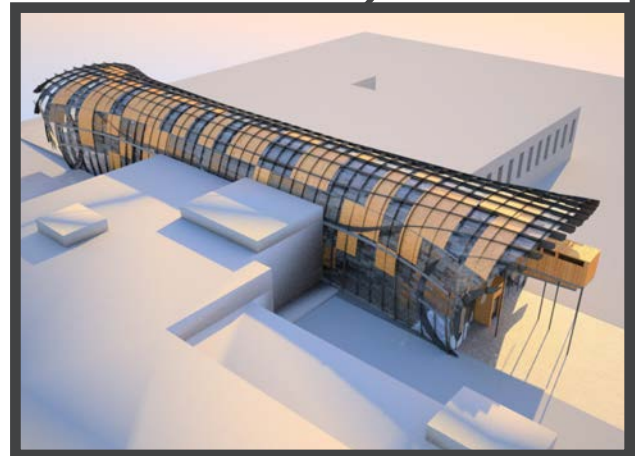
PRODUCT

A LIBRARY THAT UTILIZES TECHNOLOGY BOTH IN ITS PROGRAM AND IN ITS DESIGN AND CONSTRUCTION.

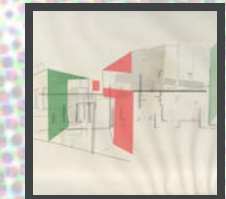
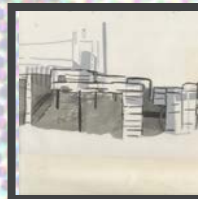
SITE PLAN



EXTERIOR PERSPECTIVE



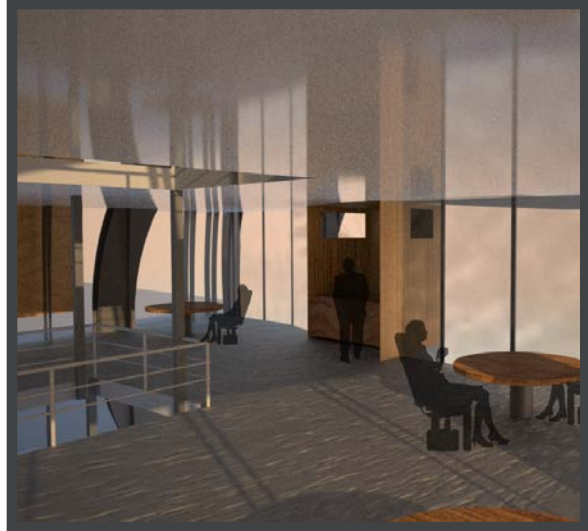
PROCESS



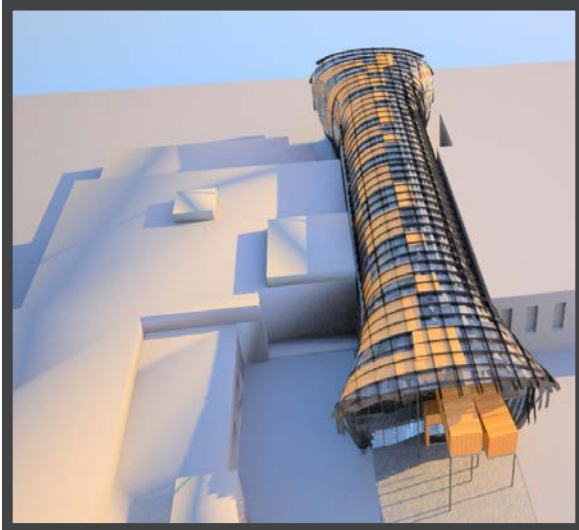
LECTURE HALL PERSPECTIVE



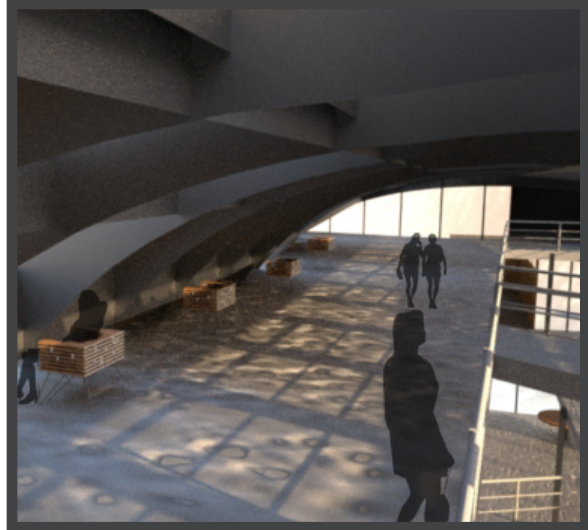
COFFEE SHOP PERSPECTIVE



EXTERIOR PERSPECTIVE



READING ROOM PERSPECTIVE



1 Y

2 Y

3 Y

4 Y

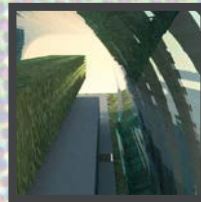
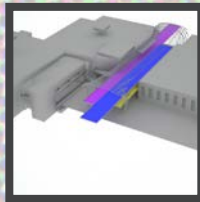
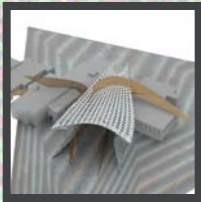
CD

LD

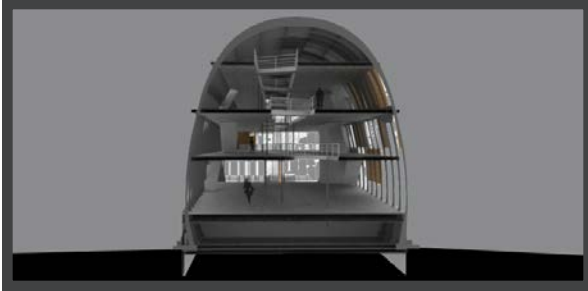
P

HG

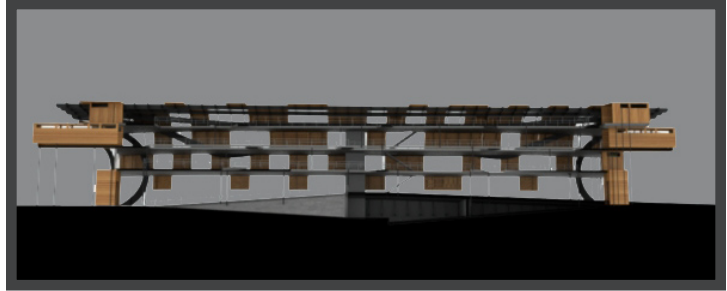
M



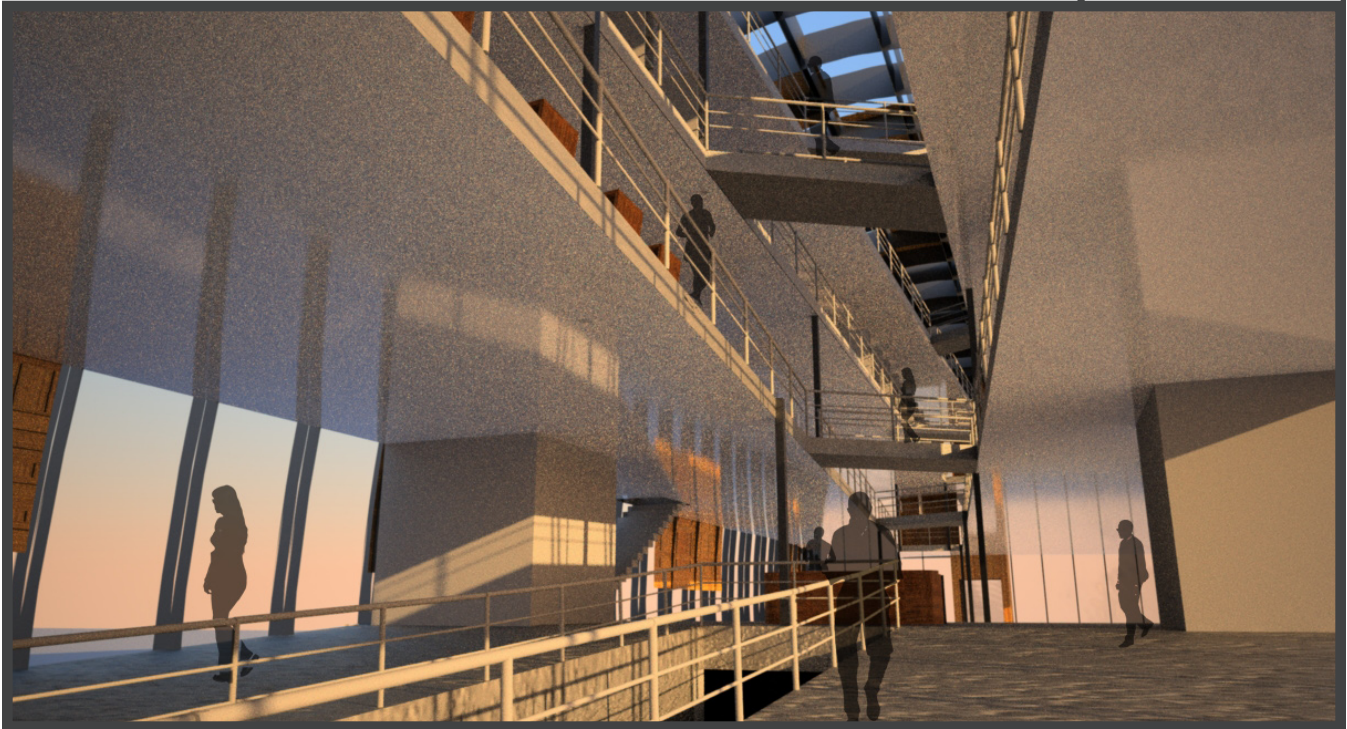
LATITUDINAL SECTION



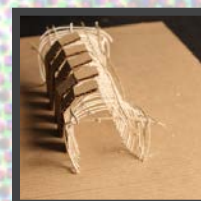
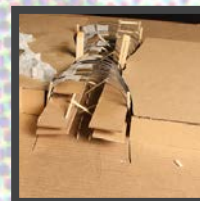
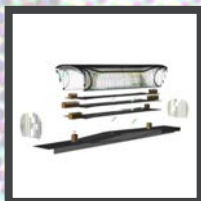
LONGITUDINAL SECTION



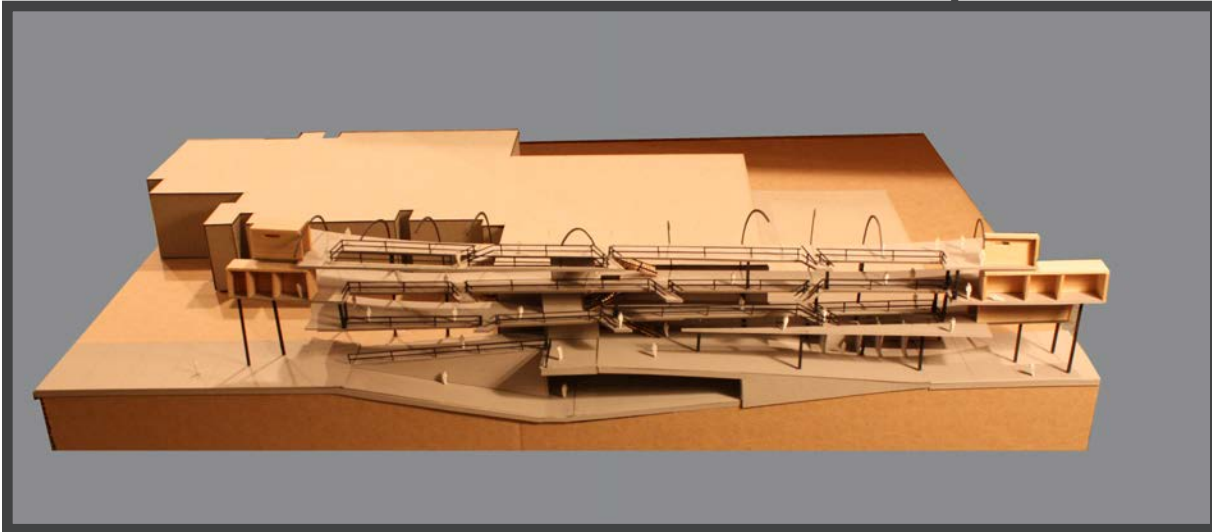
INTERIOR PERSPECTIVE



PROCESS



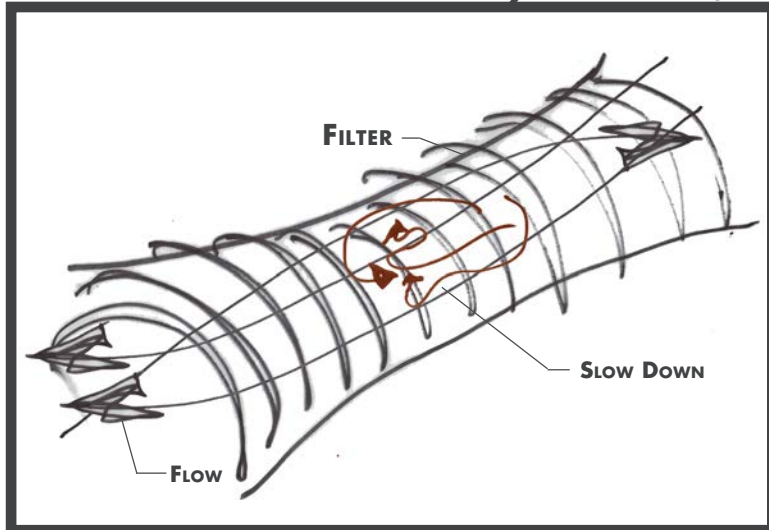
MODEL



CONCEPTUAL PAINTING



DIAGRAM



1 Y

2 Y

3 Y

4 Y

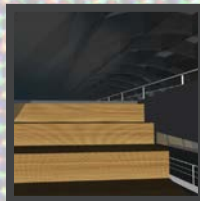
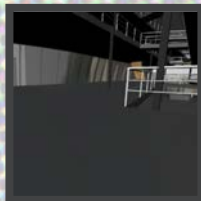
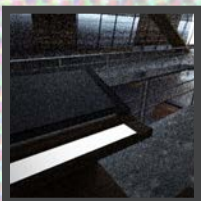
CD

LD

P

HG

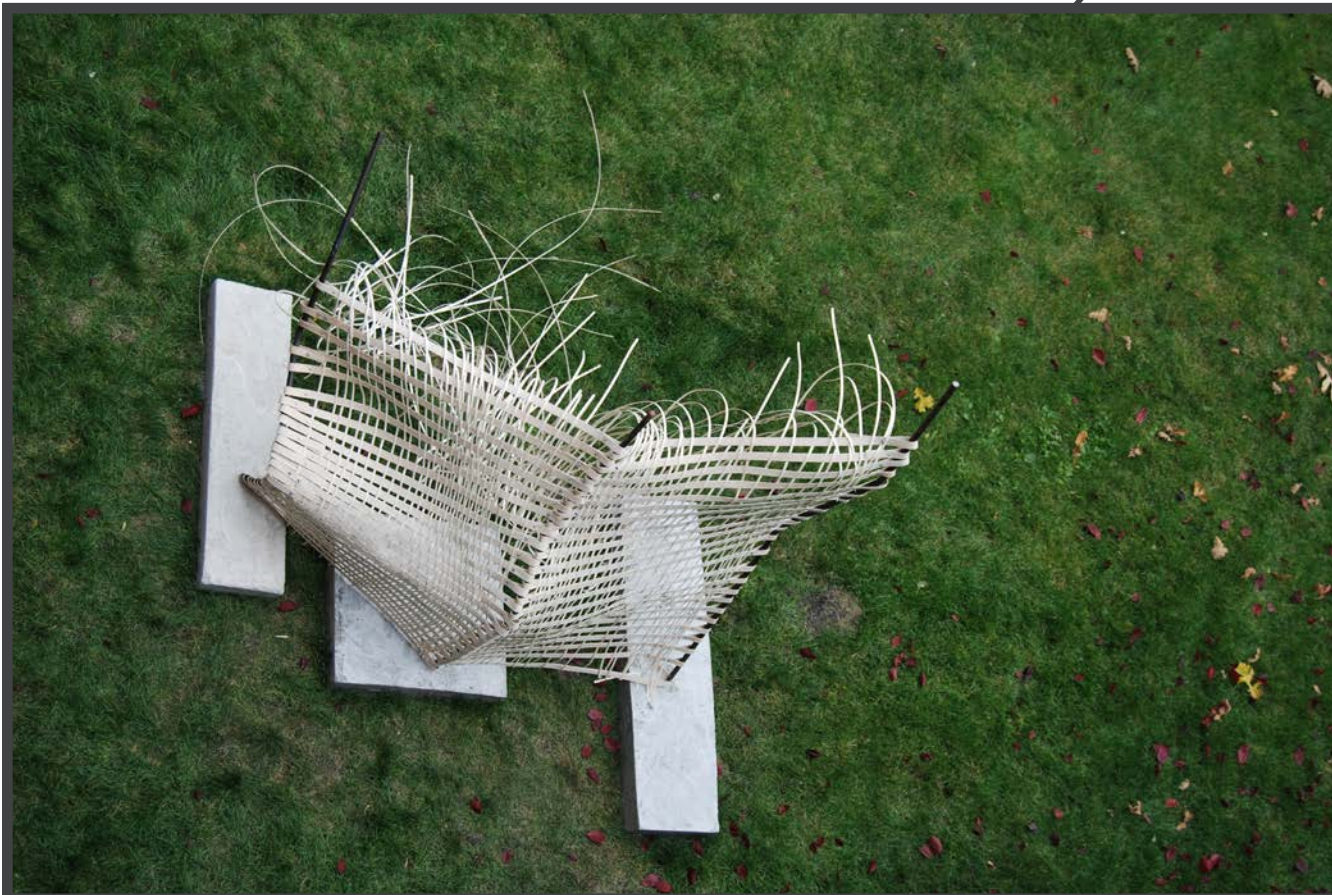
M



CHAIR DESIGN

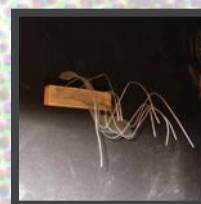
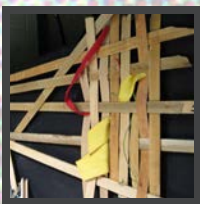
WICKER CHAIR

AERIAL VIEW



THE CHAIR WAS DESIGNED AS A MATERIALITY STUDY FOR ARCH 355. THE CHAIR EXPLORES THE IDEA OF STRENGTH THROUGH WEAVING.

PROCESS



FURNITURE

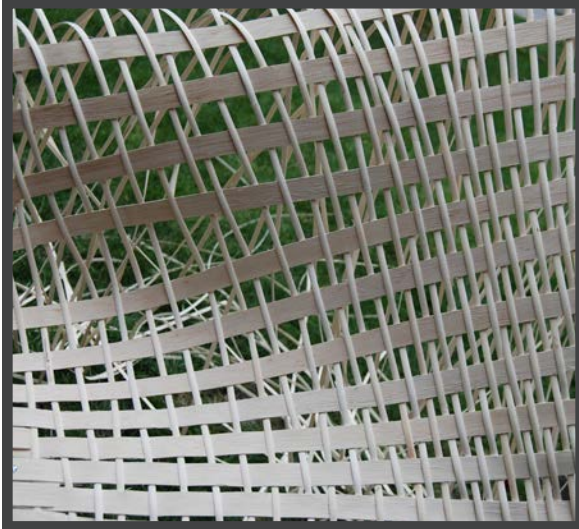
MATERIAL



CHAIR IN USE



DETAIL



MATERIAL



1 Y

2 Y

3 Y

4 Y

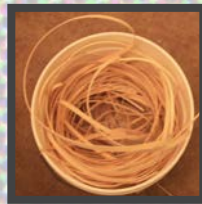
C D

L D

P

H G

M



CHAIR DESIGN

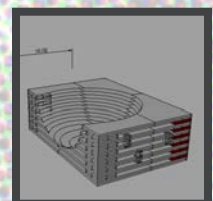
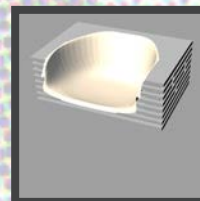
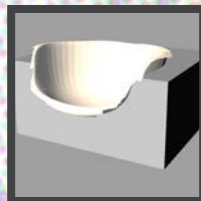
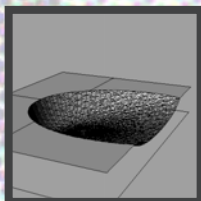
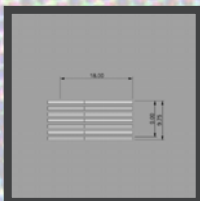
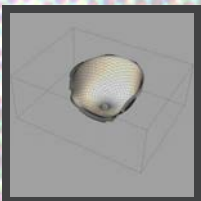
CHAR THROUGH LAYERS

AERIAL VIEW



THE CHAIR WAS DESIGNED FOR BILL CLINTON'S CHAIR DESIGN CLASS. THE CHAIR EXPLORES ASPECTS OF DIGITAL DESIGN AND FABRICATION.

PROCESS



SEAT



CHAIR IN USE



CHAIR BACK



DETAIL



1 Y

2 Y

3 Y

4 Y

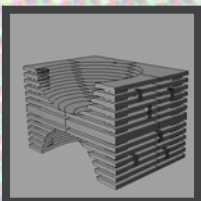
C D

L D

P

H G

M



BIRCH LAMP

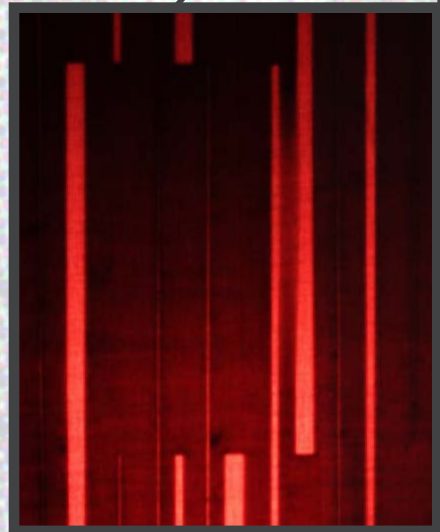
LAMP ON



LAMP OFF



DETAIL



THE LAMP EXPLORES THE RELATIONSHIP BETWEEN THE FORMAL AND INFORMAL.
WHEN THE LAMP IS OFF THE INFORMAL PATTERN OF LINES IS NOT VISIBLE, BUT
WHEN IT IS ON THE INFORMAL PATTERN OF LINES BECOMES VISIBLE

WICKER LAMP

LAMP ON

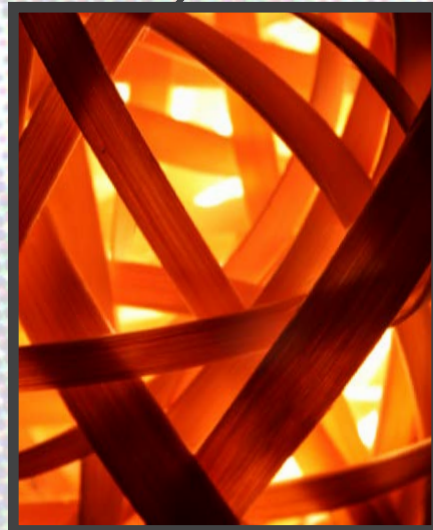


THE LAMP EXPLORES LAYERING AND OPACITY AND THE DIFFERENT QUALITIES THESE EFFECTS CAN HAVE ON LIGHT.

LAMP OFF



DETAIL



1 Y

2 Y

3 Y

4 Y

C D

LD

P

H G

M

LIGHTING DESIGN

RESIN CUBE LAMP

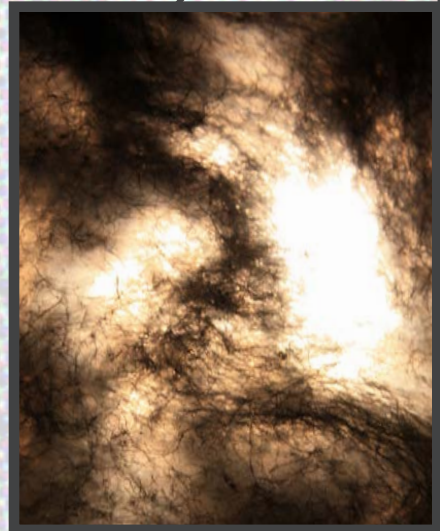
LAMP ON



LAMP OFF



DETAIL



THE LAMP EXPLORES THE RELATIONSHIP BETWEEN THE FORMAL AND INFORMAL. WHEN THE LAMP IS OFF ONLY A FORMAL GREY CUBE IS VISIBLE, BUT WHEN IT IS ON THE INFORMAL PATTERN OF THE STEEL WOOL IN THE RESIN BECOMES VISIBLE.

1 Y

2 Y

3 Y

4 Y

C D

L D

P

H G

M

LIGHT ON

THESE LIGHTS WERE DESIGNED AND BUILT BY MYSELF, AND MY ROOMMATE AS AN AFFORDABLE LOW ENERGY SOLUTION FOR LIGHTING OUR PHOTO WALL.



DETAIL



LIGHT OFF



CHICKENS



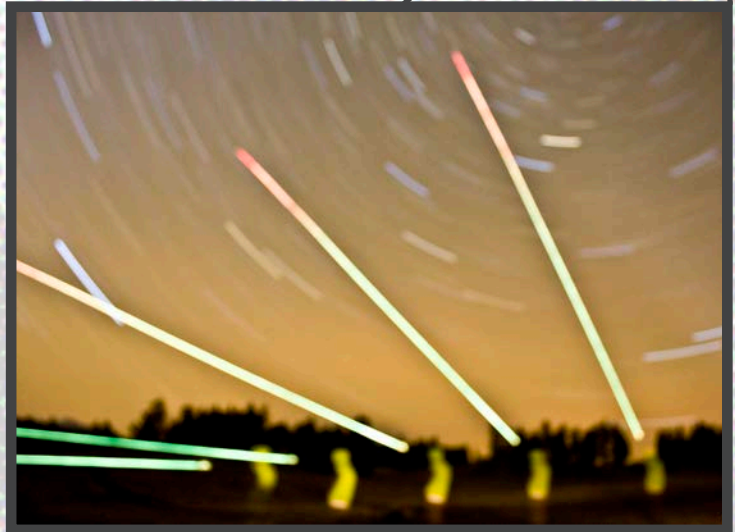
PARKING GARAGE



FISH MARKET



STAR TRAILS AND TRACER ROUNDS



1 Y

2 Y

3 Y

4 Y

C D

L D

P

H G

M

BEAR GRASS



TORI GATES



WATER TEMPLE



PHOTOGRAPHY

BLACK AND WHITE

13TH STREET



BURGER MAN



LIBRARY



MOUNTAIN GOAT





1 Y

2 Y

3 Y

4 Y

CD

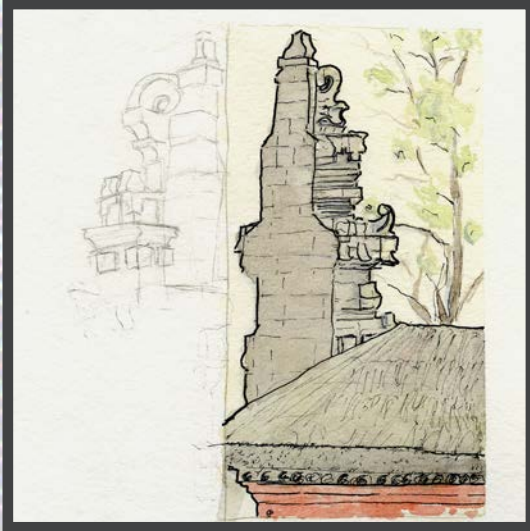
LD

P

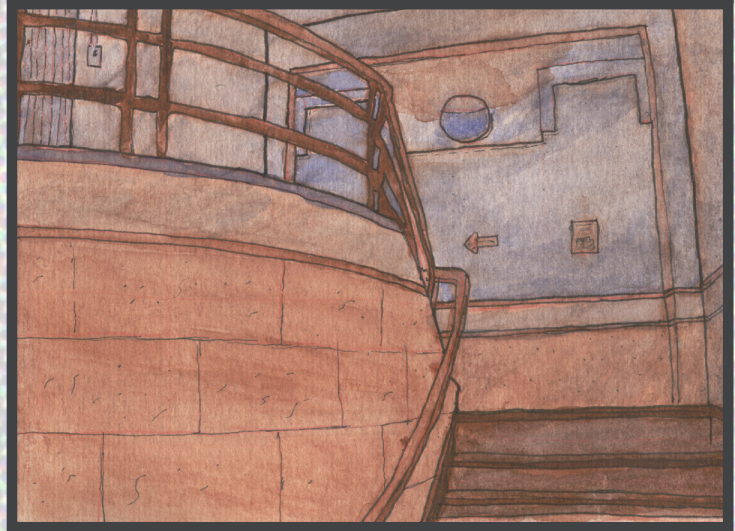
HG

M

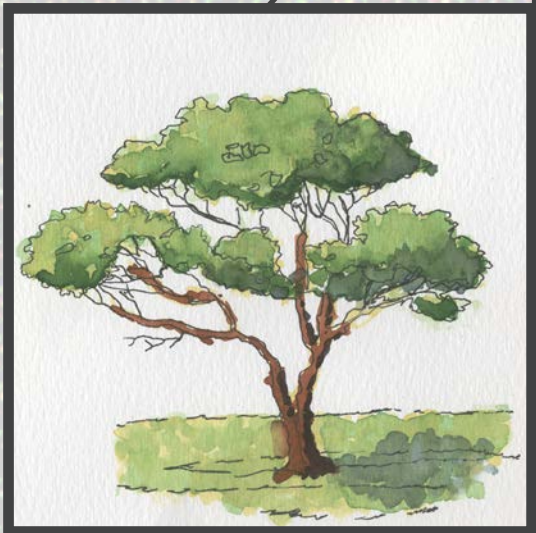
WATER COLOR, BALI



WARM AND COOL



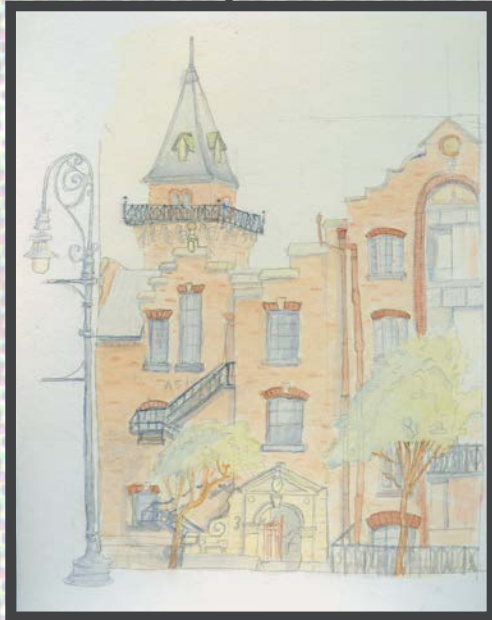
WATER COLOR



MIXED MEDIA



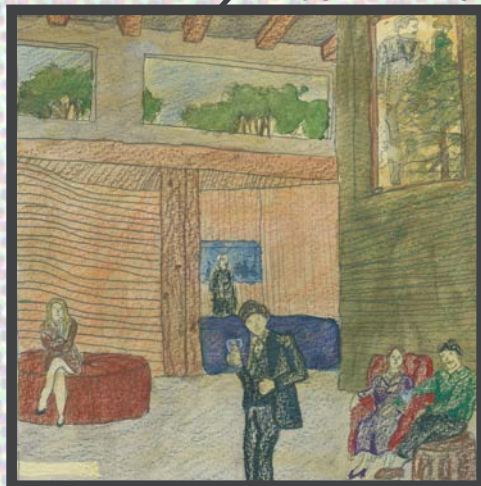
WATER COLOR, SYDNEY



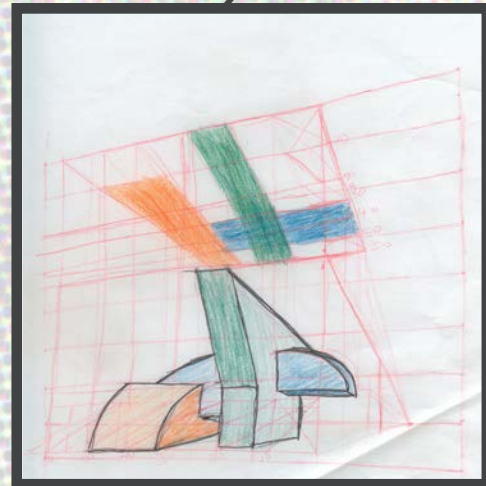
DESIGN DRAWING



DESIGN DRAWING



LAYOUT



1 Y

2 Y

3 Y

4 Y

CD

LD

P

HG

M

RENDERING



RENDERING



RENDERING



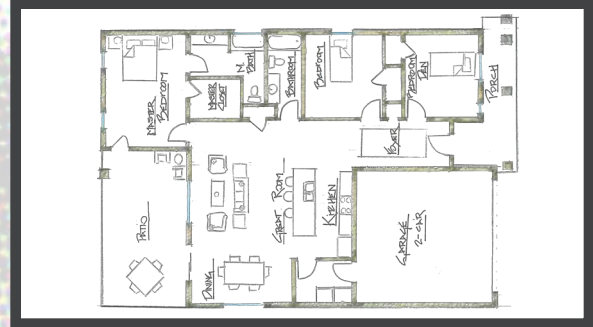
RENDERING



RENDERING



FLOOR PLAN



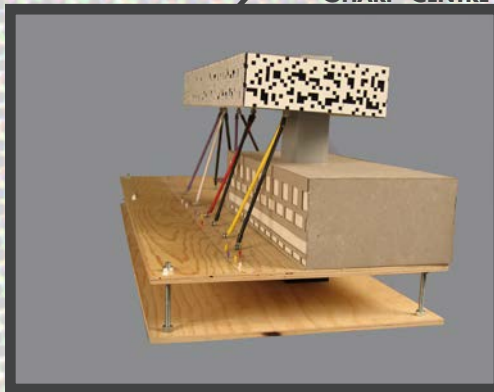
STRUCTURES PROJECTS

KUNSTHAUS



THIS MODEL ILLUSTRATES THE STRUCTURAL SYSTEM OF THE KUNSTHAUS BY PETER ZUMTHOR. IT WAS A COLLABORATION BETWEEN STEVE CLAYTON, BRENDA ZIRCHLEBAUCH, AND MYSELF.

SHARP CENTRE



SHARP CENTRE



THIS MODEL ILLUSTRATES THE LATERAL STRUCTURAL SYSTEM OF THE SHARP CENTRE FOR DESIGN BY WILL ALSOP. THE PROJECT WAS A COLLABORATION BETWEEN KURT McGRANE, BRENDA ZIRCHLEBAUCH, AND MYSELF

1 Y

2 Y

3 Y

4 Y

CD

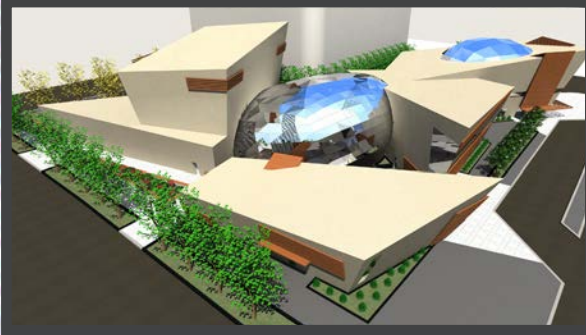
LD

P

HG

M

EXTERIOR RENDERING



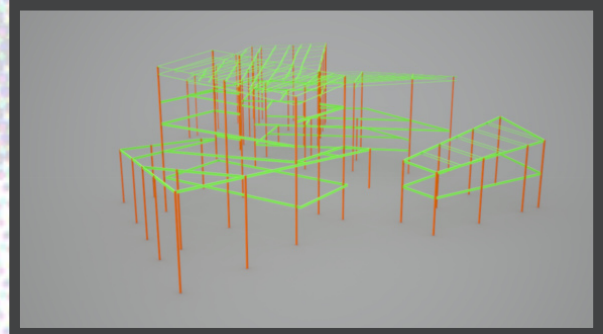
NIGHT RENDERING



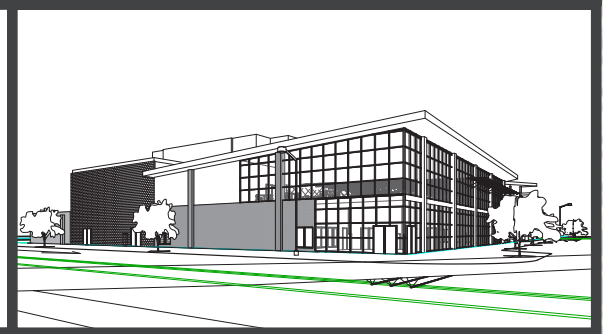
INTERIOR RENDERING



STRUCTURE



EXTERIOR RENDERING

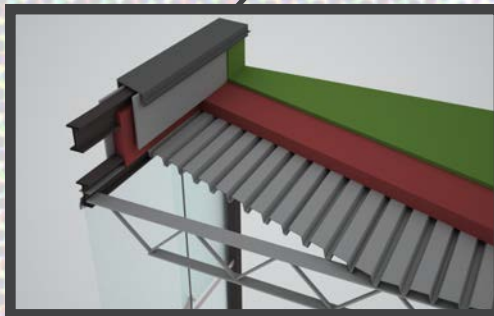


THIS PROJECT WAS A COLLABORATION BETWEEN A GROUP AT MSU BOZEMAN, CONTAINING KAARI FIOR, AND MYSELF, AND A GROUP OF FOUR STUDENTS AT THE UNIVERSITY OF NEBRASKA. THE PROJECT WAS AN EXPERIMENT IN DIGITAL COLLABORATION, THE GOAL OF THE PROJECT WAS TO AS A GROUP CREATE A PERFORMANCE CENTER IN LINCOLN NEBRASKA. FILES WERE SENT BACK AND FORTH BETWEEN OUR GROUP AND THE NEBRASKA GROUP THROUGH THE USE OF EMAIL AND AN FTP SITE.

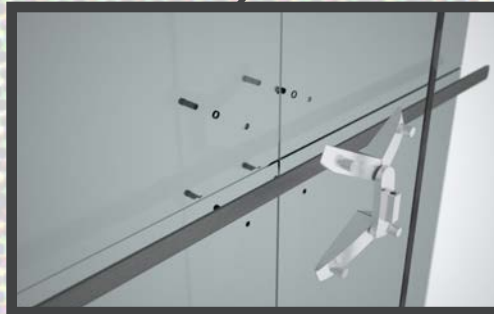
EXPLODED BUILDING SYSTEMS



PARAPET DETAIL



SPIDER CONNECTION DETAIL



EXTERIOR RENDERING

THE PROJECT IS WAS AS A GROUP OF THREE, TO DESIGN A SMALL ART GALLERY. AND TO REINVENT THE DESIGN, THROUGH A PROCESS OF DETAILING THE VARIOUS BUILDING SYSTEMS. THE VARIOUS DETAILS WERE TO BE MODELED IN 3D SO AS TO GIVE A BETTER UNDERSTANDING OF HOW ALL THE SYSTEMS FIT TOGETHER, AND BE CLEAR AND READABLE TO PEOPLE NOT ACCUSTOMED TO READING ARCHITECTURAL DETAILS.



BATHROOM PROJECT

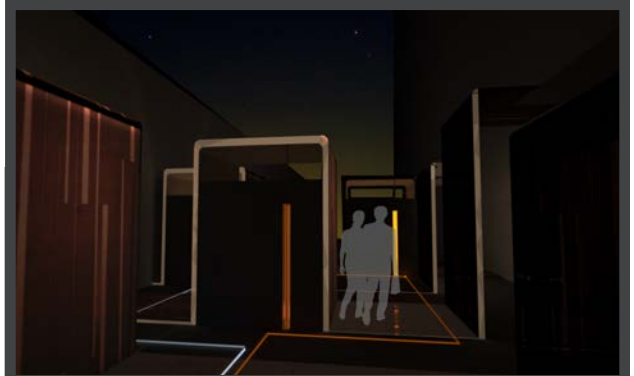
MODEL



MODEL AT NIGHT



NIGHT PERSPECTIVE



EXTERIOR PERSPECTIVE



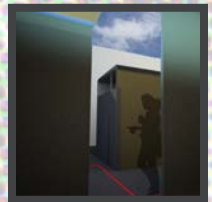
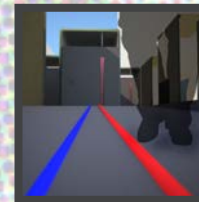
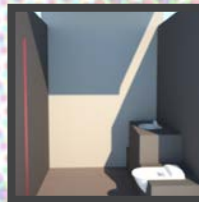
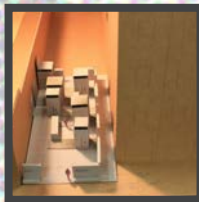
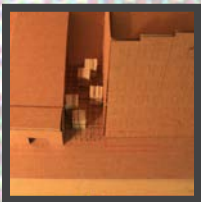
PROGRAM

CREATE A PUBLIC REST ROOM FOR DOWNTOWN BOZEMAN, BETWEEN SCHNEE'S AND THE BAXTER HOTEL

PRODUCT

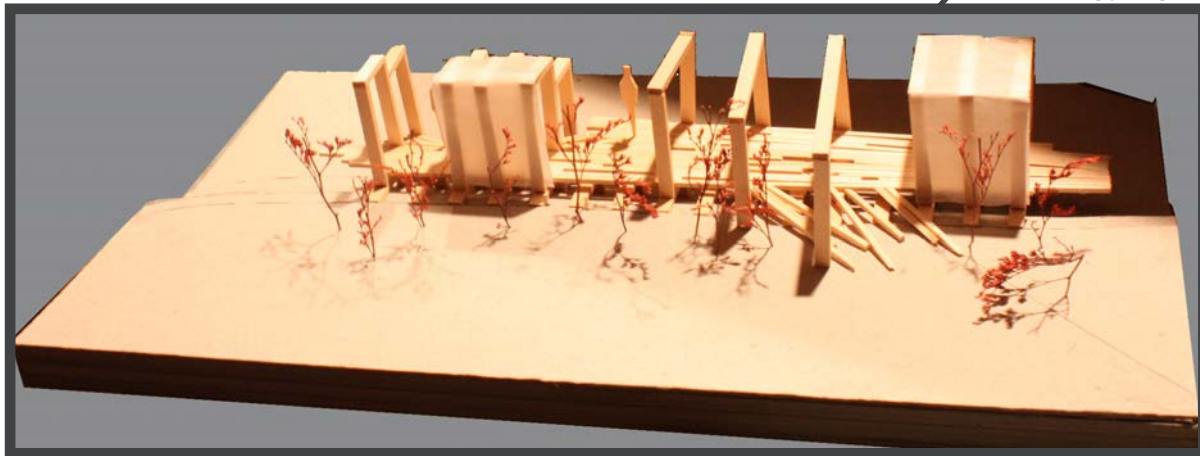
A COLLECTION OF REST ROOMS THAT TIE TOGETHER THE FORMAL AND INFORMAL NATURE OF THE SITE. AT NIGHT THE REST ROOMS BECOME LANTERNS AND LIGHT IS USED AS A MEANS OF INFORMING THE VISITOR ABOUT OCCUPANCY.

PROCESS



DOCK PROJECT

FINAL DOCK MODEL



PARTI



INITIAL STUDY MODEL



PROGRAM

CREATE A DOCK ON THE MADISON RIVER FOR USE BY THE NATURE CONSERVANCY ON THE SUN RANCH.

PRODUCT

THE DOCK BLENDS THE LANDSCAPE WITH THE RIVER THROUGH ITS FLOWING ORGANIC NATURE, AND HAPTIC PATTERN.

1 Y

2 Y

3 Y

4 Y

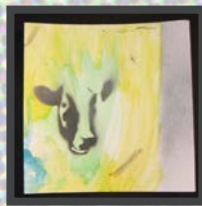
C D

L D

P

H G

M



STUDIO

FURNITURE

PHOTOGRAPHY

HAND GRAPHICS

MISCELLANEOUS

